

STUDENTS FEEDBACK ON CURRICULUM

MAR DIONYSIOUS COLLEGE PAZHANJI

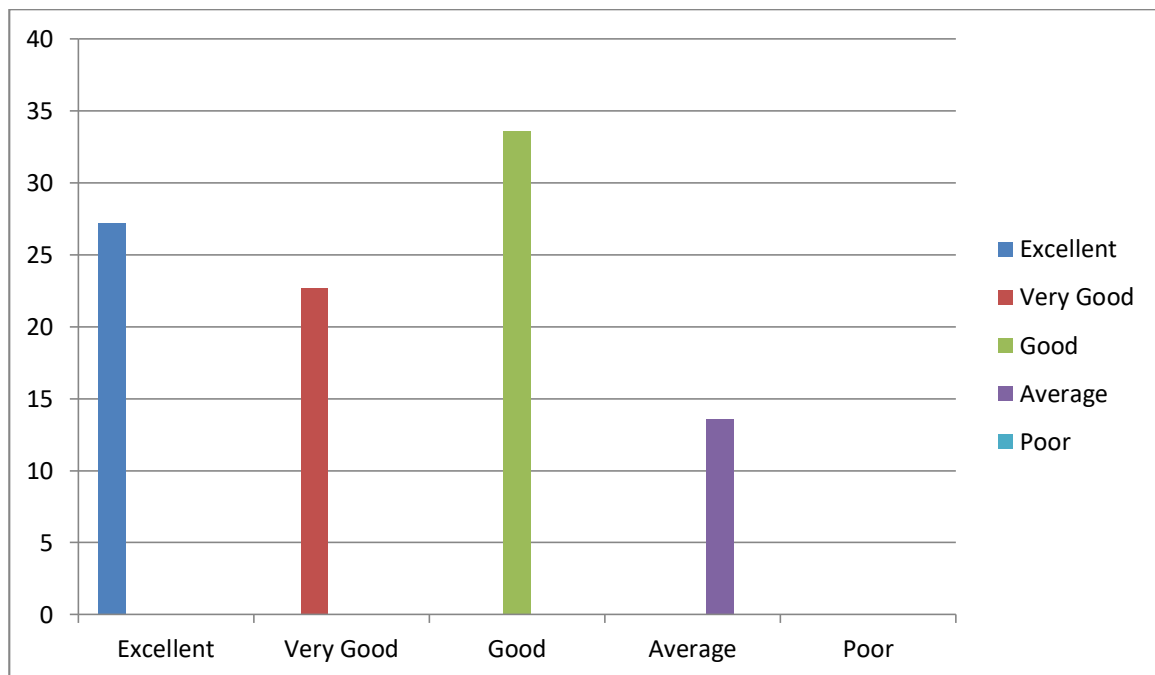
An effort was made to receive feedback from all students of the college. For this purpose, a Google form was created and sent to students. Responses have been received from students. In order to arrive to comprehensive results, useful statistical tools like percentage have been used.

Collecting feedback from the students is most crucial for the success of every institution. All these feedbacks were analysed by using a five-point rating scale. The maximum score is 5 and the minimum score is one, where 5 indicates Excellent, four means Very Good, 3 indicates Good, 2 Average and 1 indicates poor.

Question 1

1. How do you rate the relevance of the unit in the syllabus related to the course?

First question asked to the students were about the relevance of the unit in the syllabus related to the course. Students are satisfied with the course content and admits that the course content was rather pertinent .The exit feedback analysis clearly indicates that 27.27 % of students remarked as excellent 22.72% rated as very Good , 33.6% Good and 13.6% have average response.

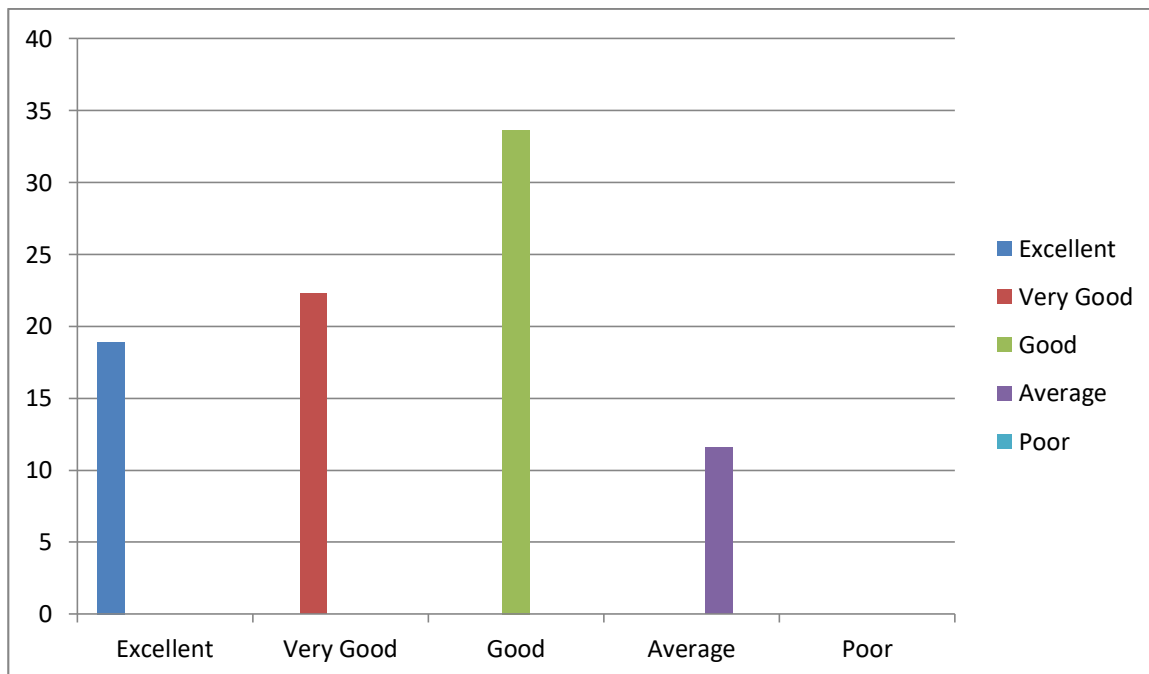


Question 2

2. How do you rate the provision for latest trends and development in the curriculum?

Constructivism, modular curriculum, credit system, Information technology these all are the emerging trends in curriculum development. These trends should be given proper justice while developing and transacting curriculum.

To the second question whether they satisfied with latest trends and development in the curriculum 18.9 % of students remarked as excellent 22.27% rated as very Good , 33.63 % Good and 11.6% have average response.

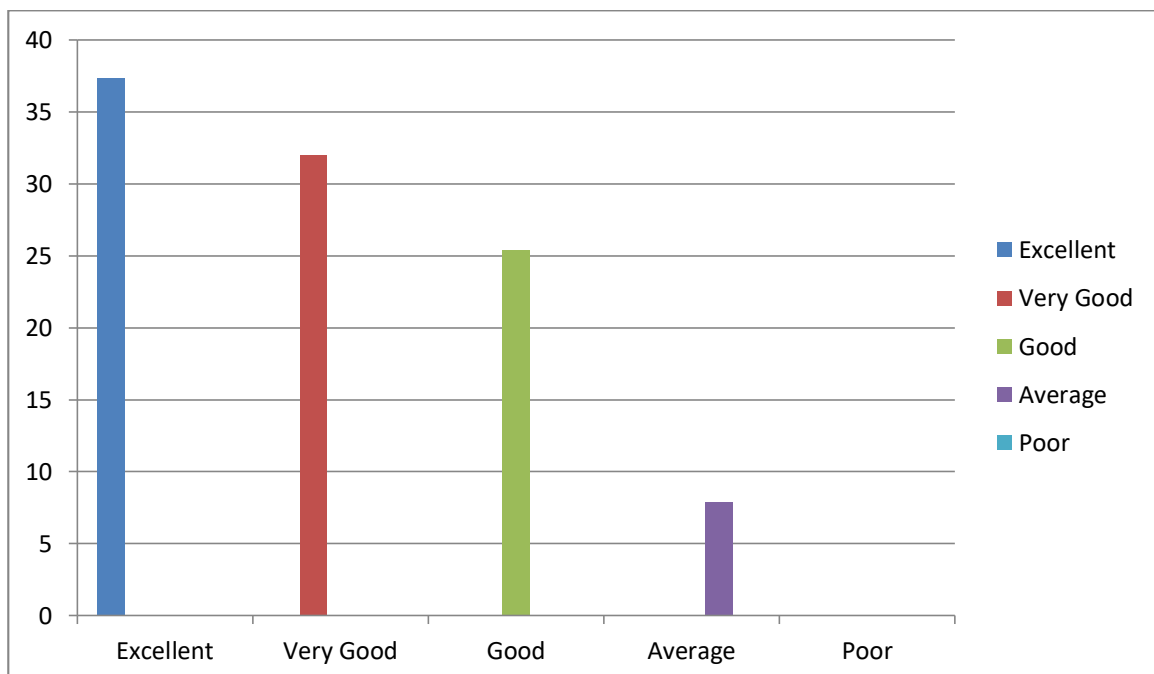


Question 3

3. How do you rate the relevance of reference books to the course

Reference book helps students in enriching their knowledge and deeper Students' concepts and understanding

To this question 37.3% rated as excellent, 32% rated as very good with the statement whereas 25.4% responds good to the question. 7.9% rated as average to the survey question and 0.4% commented poor on the statement.

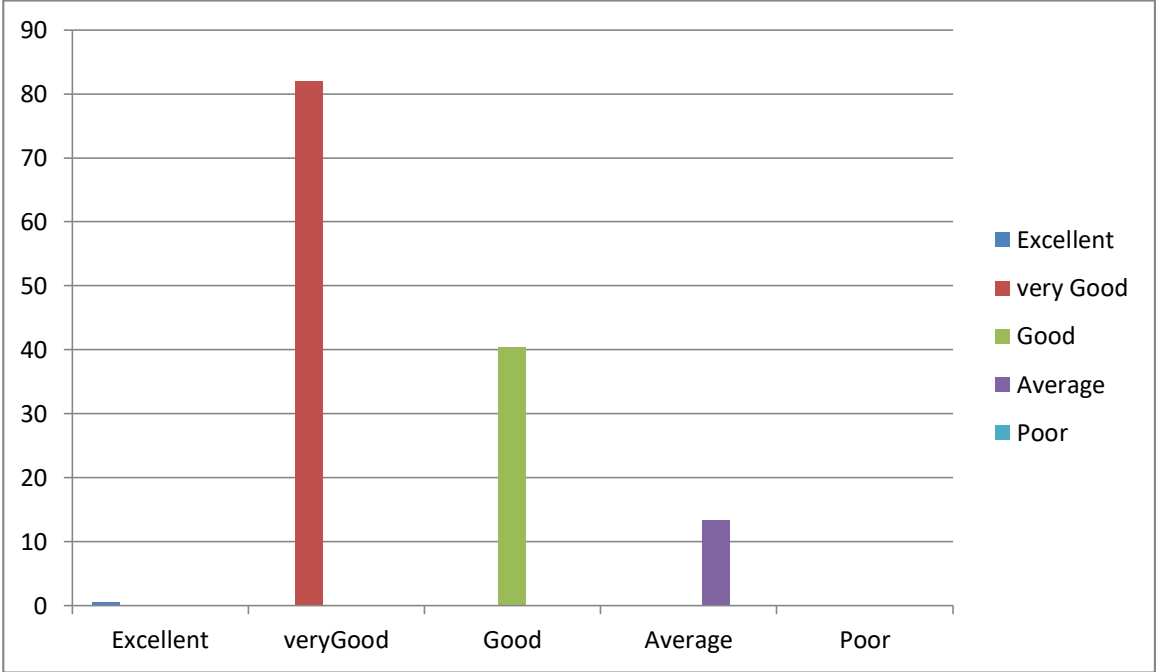


Question 4

4. How do you rate the percentage of course having Lab Components?

A laboratory gives students first-hand experience and offers better opportunities for learning not a contest but the purpose is to learn how to gain knowledge, how to observe and to learn the meaning of what happens.

To the fourth question whether they satisfied with laboratory facilities.5 % of students remarked as excellent 82% rated as very Good , 40.4 % Good and 13.6% have average response.

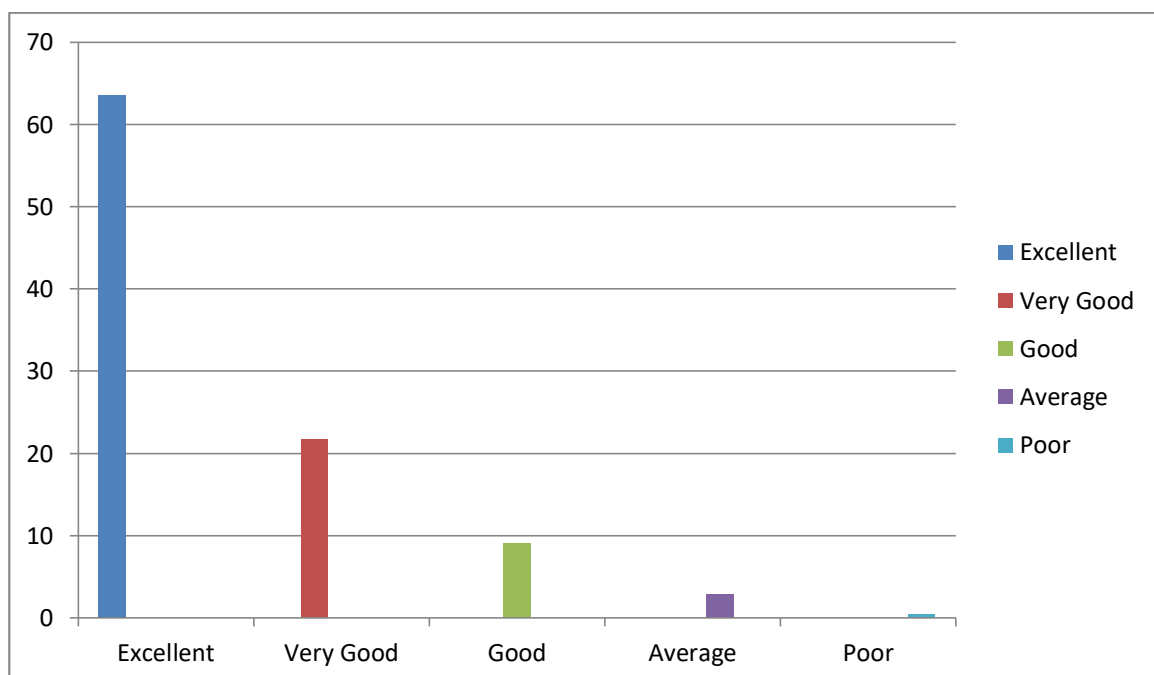


Question 5

5. How do you rate the teachers in completing entire syllabus on time?

Completing the syllabus on time is essential to complete the course with good scores. so be more effective in lesser hours

Fifth question asked to the students were about teachers competency to complete the syllabus on time. 63.5% rated as excellent, 21.7% rated as very good with the statement whereas 9.1% responds Good to the question. 2.9% rated as average to the survey question and 0.5% commented poor on the statement.



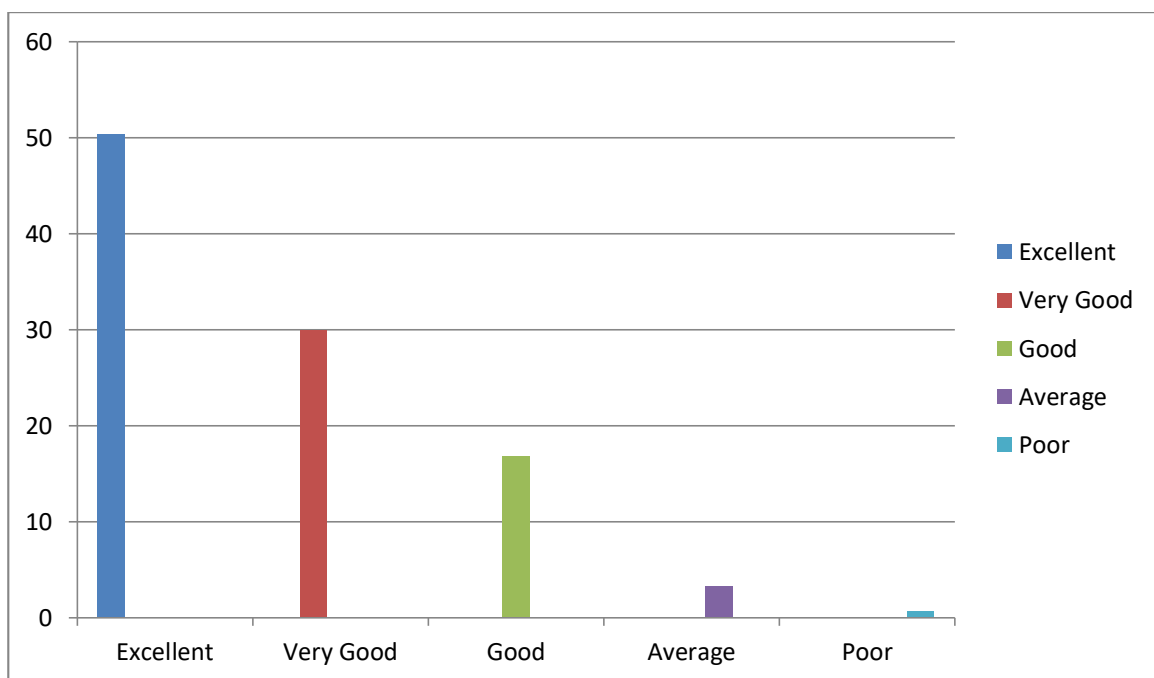
Question 6

Rate whether the electives offered is relevant to the specialization streams and advancements.

The students were satisfied with the offering of the electives in terms of their relevance to the specialization streams as well as the courses in terms of extra learning or self learning considering the design of the courses.

50.4% rated as excellent, 30% rated as very good with the statement whereas

16.8% responds good to the question. 3.3% rated as average to the survey question and 0.7% commented poor on the statement.

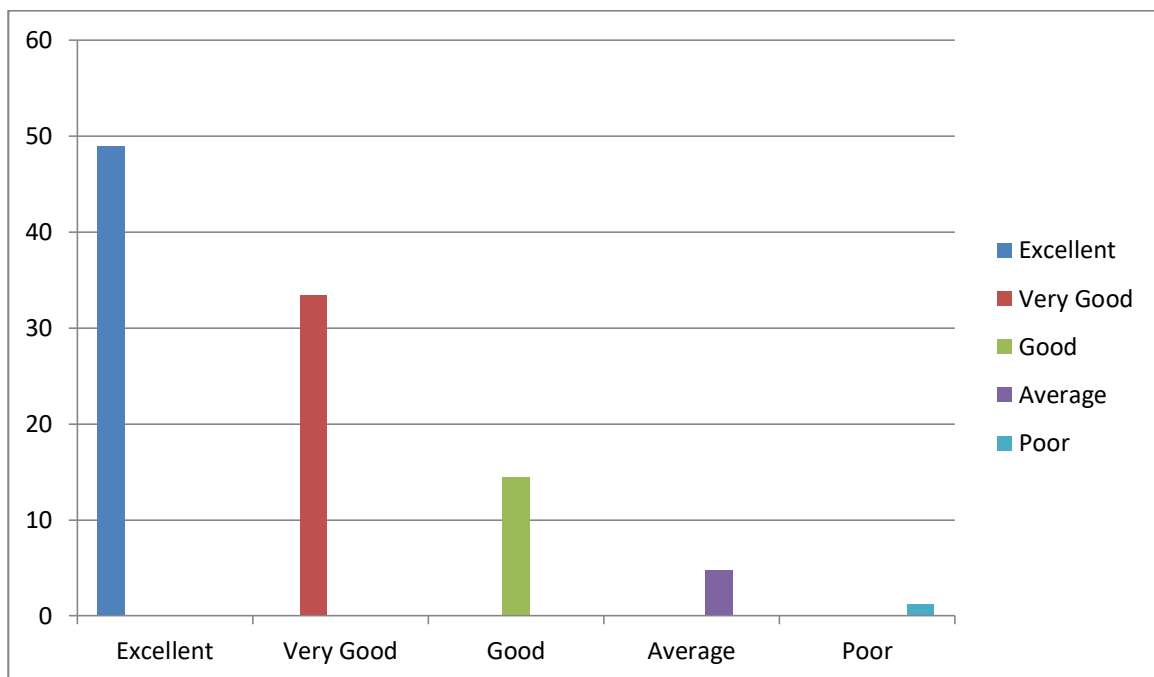


Question 7

7. Rate career opportunity or employability of the course.

Seventh question asked to the students were whether curriculum helps to get meaningful employment .Students are satisfied with the course content and admits that the course content was rather pertinent in employment.

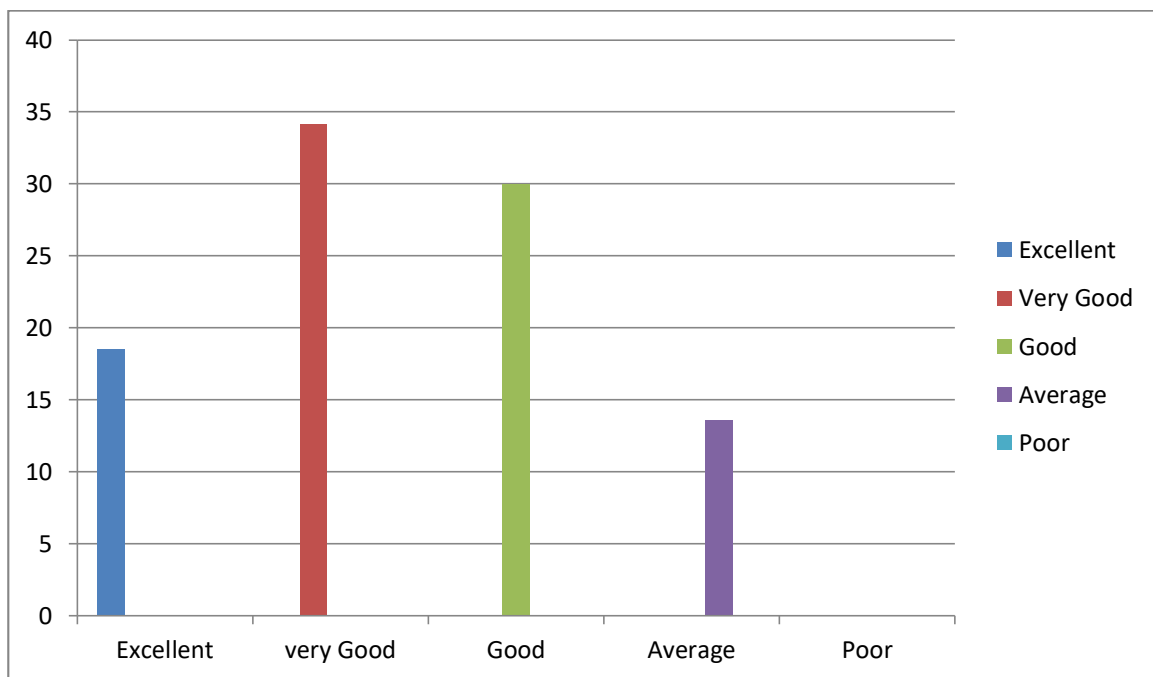
49% rated as excellent, 33.4% rated as very good with the statement whereas 14.4% responds Good to the question. 4.7% rated as average to the survey question and 1.2% commented poor on the statement.



8. Rate other study method used by faculty other than lecturing

Teachers consider different approaches to lecture that introduce more active and participatory components, thereby enhancing higher orders of thinking and learning during class.

To the eight questions how effectively lectures are given as part of curriculum. 18.5 % of students remarked as excellent 34.2% rated as very Good , 30% Good and 13.6% have average response.



Institutional Feedback

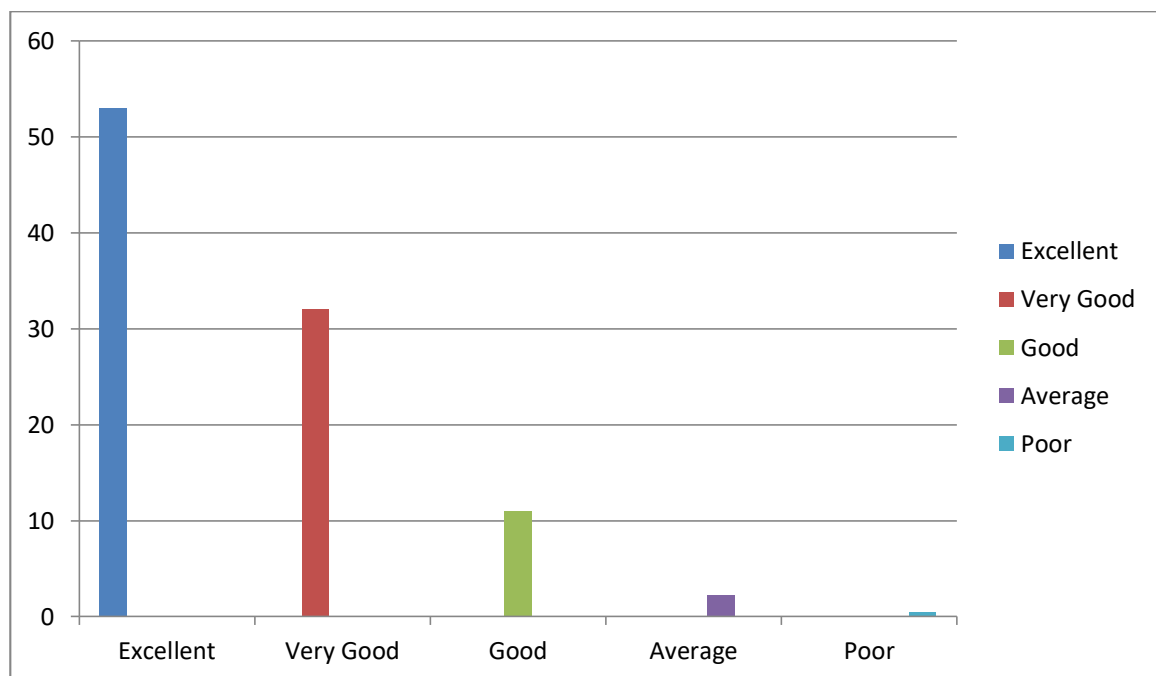
The institution collects feedback on curriculum aspects and courses from different stakeholders such as the students, alumni, Faculty, and Employers. The Institution established Academic Council to ensure and analyze academic excellence at student and faculty levels.

All these feedbacks were analysed by using a five-point rating scale. The maximum score is 5 and the minimum score is one, where 5 indicates Excellent, four means Very Good, 3 indicates Good, 2 Average and 1 indicates poor.

1. How do you evaluate your entire educational experience in this institution?

College life provided with many new opportunities to learn new things such as being independent, new culture, a new environment, new friends and a chance to study and make my dreams come true.

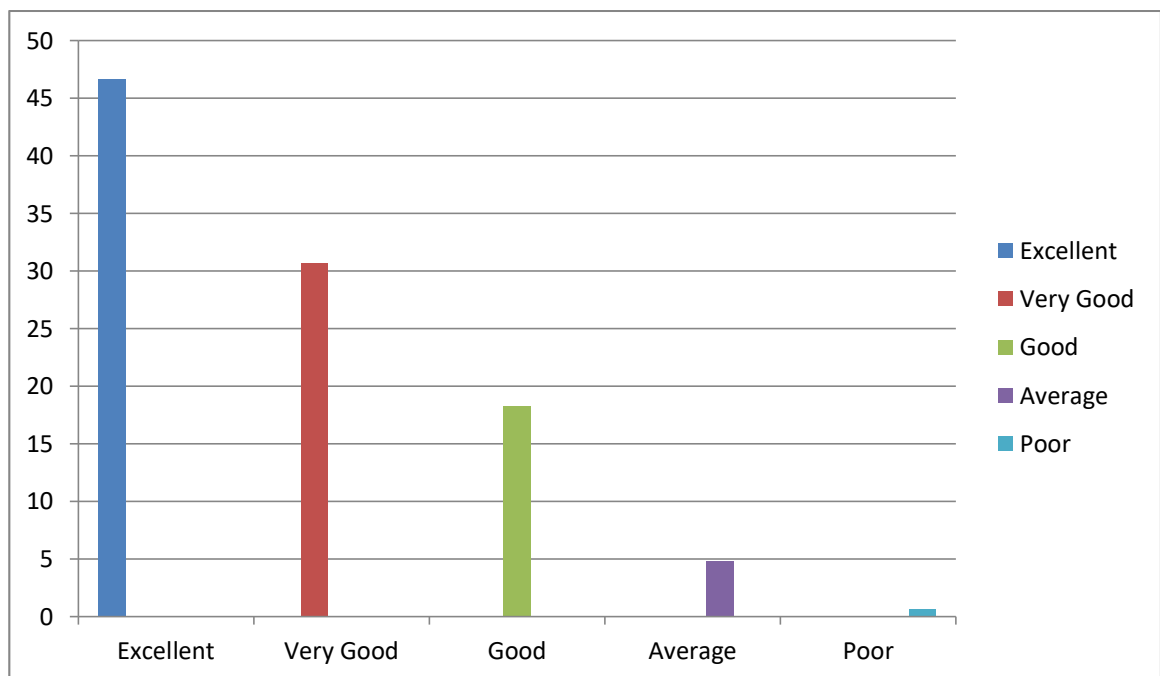
For the first question 53% rated as excellent, 32% rated as very good with the statement whereas 11% responds good to the question. 2.3% rated as average to the survey question and 0.5% commented poor on the statement.



2. Does the institution help you in developing a personal code of values and ethics?

A code of ethics is important because it clearly lays out the rules for behavior and provides the groundwork for a preemptive warning. Thus, ethics & values build credibility, Leadership skills, improves decision making, and provides long term gains. Ethics and values help in satisfying basic human needs

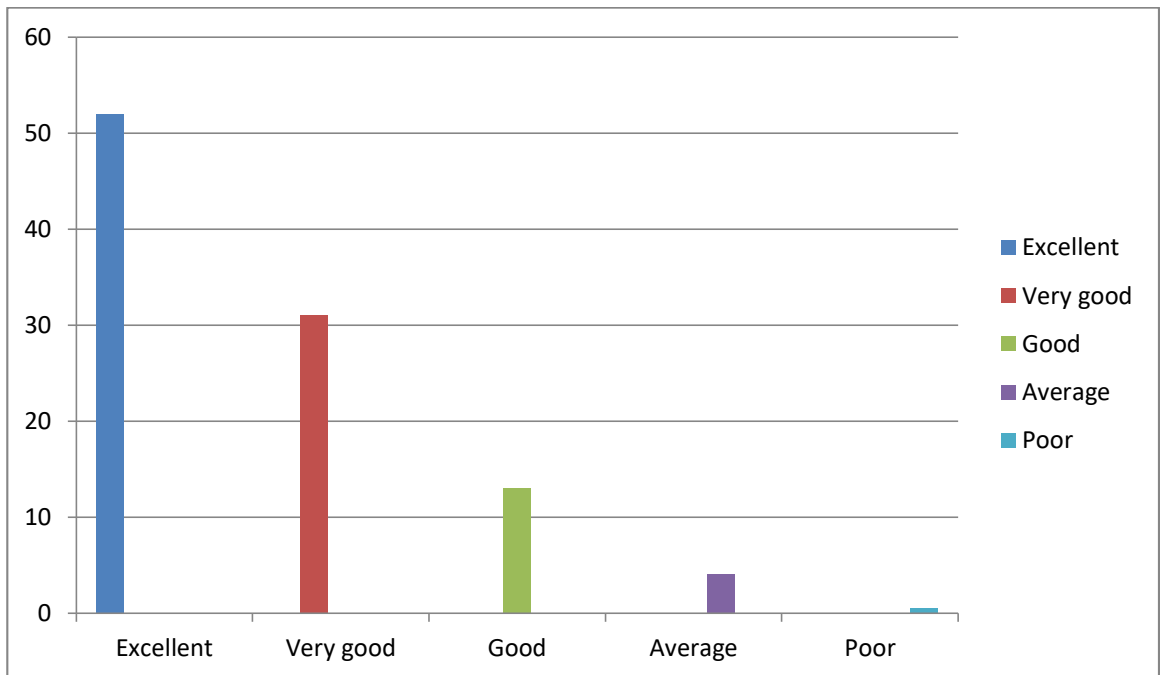
46.7% rated as excellent, 30.7% rated as very good with the statement whereas 18.3% responds good to the question. 4.8% rated as average to the survey question and 0.6% commented poor on the statement.



3. How far institution is encouraging in contact among students from different economic, social, racial or ethnic backgrounds.

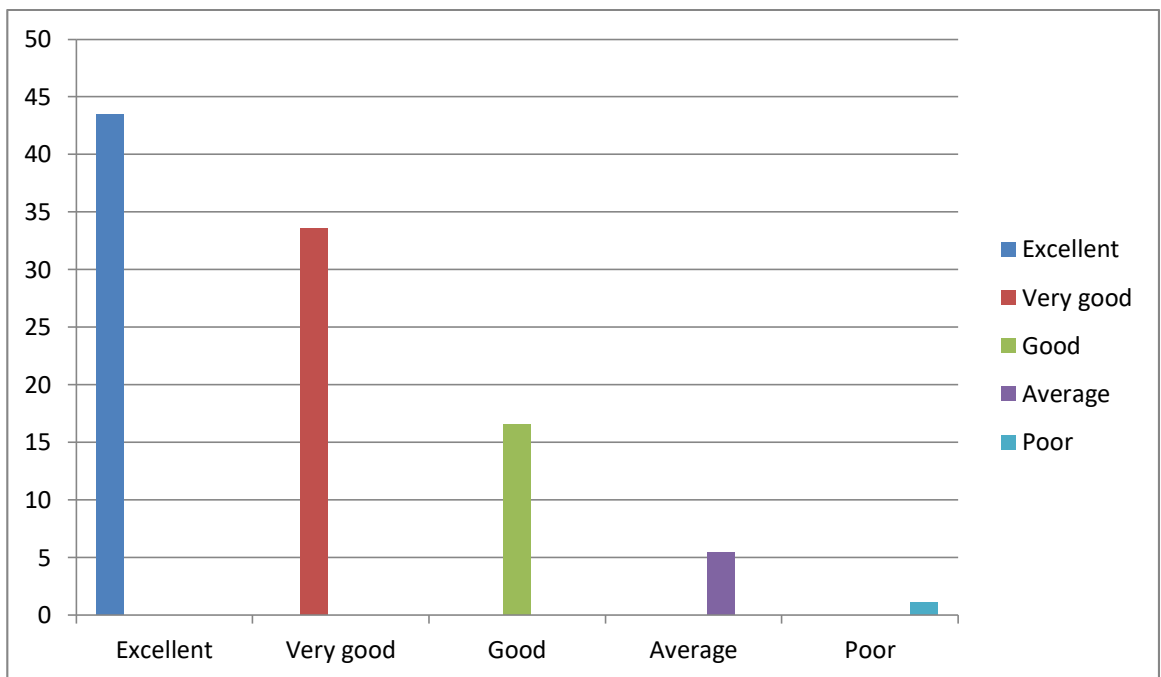
Racial and socioeconomic diversity in the classroom can provide students with a range of cognitive and social benefits.

52% rated as excellent, 31% rated as very good with the statement whereas 13% responds Good to the question. 4% rated as average to the survey question and 0.5% commented poor on the statement.



4. How far institution is helping you to cope-up with your non-academic responsibilities?

43.5% rated as excellent, 33.6% rated as very good with the statement whereas 16.6% responds good to the question. 5.5% rated as average to the survey question and 1.1% commented poor on the statement.



5. How far the institution supporting you to develop extra-curricular activities?

Co-Curricular activities are integrated into the academic curriculum to help students acquire talents beyond their subject knowledge.

For this question 54% rated as excellent, 21% rated as very good with the statement whereas 14.7% responds Good to the question. 5.4% rated as average to the survey question and 1.3% commented poor on the statement.

